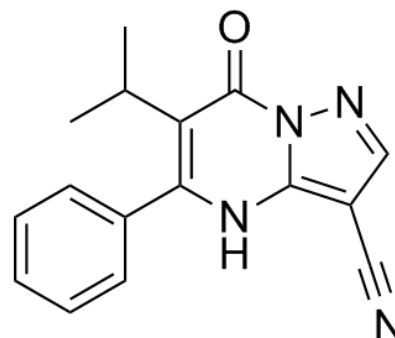


Product Name : CPI-455
Cat. No. : PC-42148
CAS No. : 1628208-23-0
Molecular Formula : C₁₆H₁₄N₄O
Molecular Weight : 278.3086
Target : Histone Demethylase
Solubility : DMSO: ≥ 34 mg/mL



Biological Activity

A potent, specific histone demethylase pan-KDM5 inhibitor with biochemical IC₅₀ of 10, 3 and 14 nM for KDM5A, KDM5B and KDM5C, respectively; shows substantially weaker potency toward KDM4C and KDM7B (200- and 770-fold, respectively) and no inhibition of KDM2B, KDM3B or KDM6A; dose-dependently increases in H3K4 methylation in multiple cell lines, decreases the number of drug-tolerant persister cancer cells (DTPs) in multiple cancer cell line models treated with standard chemotherapy or targeted agents.

References

- Vinogradova M, et al. Nat Chem Biol. 2016 Jul;12(7):531-8.
Banelli B, et al. Oncotarget. 2017 May 23;8(21):34896-34910.

Caution: Product has not been fully validated for medical applications. Lab Use Only!

E-mail: tech@probechem.com